

orcid.org

İnternet erişimi olan her yerden ORCID programını kullanabilirsiniz.

ORCID
Connecting research and researchers

SIGN IN/REGISTER

English

Registry

Search...



SIGN in butonuna tıklayarak giriş yapabilirsiniz.

FOR RESEARCHERS

FOR ORGANIZATIONS

ABOUT

HELP

iD

Distinguish yourself in three easy steps

ORCID provides a persistent digital identifier (an ORCID iD) that you own and control, and that distinguishes you from every other researcher. You can connect your iD with your professional information — affiliations, grants, publications, peer review, and more. You can use your iD to share your information with other systems, ensuring you get recognition for all your contributions, saving you time and hassle, and reducing the risk of errors.

[FIND OUT MORE ABOUT OUR MISSION AND VALUES](#)

1

REGISTER

Get your unique ORCID identifier. It's free and only takes a minute, so register now!

2

USE YOUR ORCID ID


Use your iD, when prompted, in systems and platforms from grant application to manuscript submission and beyond, to ensure you get credit for your contributions.

3

SHARE YOUR ORCID iD

The more information connected to your ORCID record, the more you'll benefit from sharing your iD - so give the organizations you trust permission to update your record as well as adding your affiliations, emails, other names you're known by, and more.

Sign into ORCID or [Register now](#)

 Personal account

 Institutional account

Sign in with your ORCID account

Email or ORCID ID

Email or ORCID ID


ORCID password

ORCID password

Sign into ORCID

[Forgotten your password? Reset it here](#)

Sign in with a social media account ?

 Sign in with Google

 Sign in With Facebook

Sistemde kaydınız yoksa 'Register now' butonuna tıklayarak kaydınızı gerçekleştirebilirsiniz.

Daha önce açılmış bir hesabınız var ve şifrenizi unuttuysanız 'Forgotten your password' butonuna tıklayarak şifre sıfırlama işlemi gerçekleştirebilirsiniz.

Register for an ORCID iD

ORCID provides a persistent digital identifier that distinguishes you from every other researcher and, through integration in key research workflows such as manuscript and grant submission, supports automated linkages between you and your professional activities ensuring that your work is recognized.

Per ORCID's terms and conditions, you may only register for an ORCID ID for yourself.

First name

Last name (Optional)

Primary email

Additional email (Optional)

Add another email

Password

8 or more characters

1 letter or symbol

1 number

Confirm Password

Visibility settings

Your ORCID iD connects with your ORCID record that can contain links to your research activities, affiliations, awards, other versions of your name, and more. You control this content and who can see it. More information on visibility settings.

By default, who should be able to see information added to your ORCID Record?

- Everyone (87% of users choose this)
- Trusted parties (5% of users choose this)
- Only me (8% of users choose this)

Notification settings

ORCID sends email notifications about items related to your account, security, and privacy, including requests from ORCID member organizations for permission to update your record, and changes made to your record by those organizations.

You can also choose to receive emails from us about new features and tips for making the most of your ORCID record.

Please send me quarterly emails about new ORCID features and tips

To receive these emails, you will also need to verify your primary email address.

After you've registered, you can change your notification settings at any time in the account settings section of your ORCID record.

Terms of Use

I consent to the privacy policy and terms and conditions of use, including agreeing to my data being processed in the US and being publicly accessible where marked Public.

You must accept the terms and conditions.

Ben robot değilim



Register

Sembolünü seçmeniz yayınlarınızın görünürlüğünü arttıracaktır.

Yeni çalışmalarınızın başka kişiler tarafından görünebilir olmasını sembollerden birini seçerek ayarlayabilirsiniz.

Herhangi bir e-posta adresiyle kaydolabilirsiniz.

Kurumsal e-posta adresinizle yazar ID oluşturmamanız önerilir. Kurumdan ayrılmanız durumunda e-posta hesabınız kapatılacağından yeni bir ID almanız gerekebilir.

Herkese açık


Sınırlı erişim

Gizli

Kişisel bilgilerinize ilişkin güncellemeleri buraya tıklayarak yapabilirsiniz.


 **Firdevs Merve Tatlı**

ORCID iD


 <https://orcid.org/0000-0003-3156-0476>

[View public version](#)

 [Display your iD on other sites](#)

 [Public record print view](#)

 [Get a QR Code for your iD](#)

 [Also known as](#)

 [Country](#)

 [Keywords](#)

 [Websites](#)

 [Other IDs](#)

 [Emails](#)

fmr1206@gmail.com

İsterseniz ORCID'nizin QR kodunu da alabilirsiniz.

İlgili alanları doldurunuz.

Biography**Employment (0)**[+ Add employment](#)[Sort](#)

You haven't added information to this section yet; [add an employment now](#)

Education and qualifications (0)[+ Add qualification](#)[+ Add education](#)[Sort](#)

You haven't added information to this section yet; [add an education or a qualification now](#)

Invited positions and distinctions (0)[+ Add invited position](#)[+ Add distinction](#)[Sort](#)

You haven't added information to this section yet; [add a distinction or an invited position now](#)

Membership and service (0)[+ Add service](#)[+ Add membership](#)[Sort](#)

You haven't added information to this section yet; [add a membership or a service now](#)

Funding (0)[+ Add funding](#)[Sort](#)

You haven't added any funding, [add some now](#)

Works (0 of 0)[+ Add works](#)[Sort](#)

You haven't added any works, [add some now](#)

Biyografinizi eklemek için buraya tıklayabilirsiniz.



Eğitim vb. bilgilerinizi ekleyebilirsiniz.

Firdevs Merve Tatlı

ORCID iD

<https://orcid.org/0000-0003-3156-0476>

[View public version](#)

[Display your iD on other sites](#)

[Public record print view](#)

[Get a QR Code for your iD](#)

[Also known as](#)

[Country](#)

[Keywords](#)

[Websites](#)

[Other IDs](#)

[Emails](#)

fmt1206@gmail.com

Biography



Employment (0)

+ Add employment

Sort

You haven't added information to this section yet; [add an employment now](#)

Education and qualifications (0)

+ Add qualification

+ Add education

Sort

You haven't added information to this section yet; [add an education or a qualification now](#)

Invited positions and distinctions (0)

+ Add invited position

+ Add distinction

Sort

You haven't added information to this section yet; [add a distinction or an invited position now](#)

Membership and service (0)

+ Add service

+ Add membership

Sort

You haven't added information to this section yet; [add a membership or a service now](#)

Funding (0)

+ Add funding

Sort

You haven't added any funding, [add some now](#)

Works (0 of 0)

+ Add works

Sort

You haven't added any works, [add some now](#)

ORCID ile bağlantılı sayfalardan toplu yayın eklemek için buraya tıklayınız.

Manuel olarak yayın eklemek için buraya tıklayınız.

DOI numarasıyla eklemek için tıklayınız.

Google Scholar da dahil olmak üzere export ettiğiniz bibtex uzantılı dosyaları yükleyerek çalışmalarınızı ekleyebilirsiniz.

- Search & link
- Add ArXiv ID
- Add DOI
- Add PubMed ID
- Import BibTeX
- Add manually

Keywords

Websites

Other IDs

Emails
fmt1206@gmail.com

Search & Link ile toplu yayın ekleme için beraber çalıştığı kurumların listesi sağ tarafta görülmektedir, seçiminizi yaparak yayınlarınızı toplu olarak ekleyebilirsiniz.

ResearcherID ve ORCID ile yayınlarınızı eşleştirebilirsiniz.

Scopus'tan ORCID'e veri aktarımı yaparak Scopus Author ID de oluşturabilirsiniz.

Works (0 of 0)

+ Add works

Sort

LINK WORKS

Hide link works

ORCID works with our member organizations to make it easy to connect your ORCID ID and link to information in their records. Choose one of the link wizards to get started. [More information about linking works](#)

Work type: All

Geographical area: All

Airiti

Enables users to import metadata from Airiti, including journal papers, proceedings, dissertations, and books. Scholars can easily collec...

▼

BASE - Bielefeld Academic Search Engine

BASE is one of the world's most voluminous academic search engines. It searches metadata about more than 100 million documents fr...

▼

Crossref Metadata Search

Import your publications from Crossref's authoritative, publisher-supplied metadata on over 70 million scholarly journal and conferenc...

▼

DataCite

Enable the DataCite Search & Link and Auto-Update services. Search the DataCite Metadata Store to find your research datasets, image...

▼

Deutsche Nationalbibliothek (DNB)

Search the catalogue of the German National Library (DNB) by your name and link your publications to your ORCID record. The Germa...

▼

Europe PubMed Central

Europe PubMed Central (Europe PMC) offers this tool to enable you to link anything in Europe PMC to your ORCID. Europe PMC contain...

▼

ISNI

ISNI Linker Search the ISNI registry by your name and link your ISNI record to your ORCID record as an external identifier. The Internati...

▼

KoreaMed

KoreaMed provides access to articles published in Korean medical, dental, nursing, nutrition, and veterinary journals. KoreaMed record...

▼

MLA International Bibliography

Search the MLA International Bibliography for your works, including those published under variant names, and add them to your ORCID...

▼

Redalyc

Una plataforma que permite identificar tus trabajos publicados en revistas arbitradas de Acceso Abierto indizadas en Redalyc y crear tu...

▼

Research Data Australia

Research Data Australia enables the discovery of datasets from Australian research organisations, government agencies, and cultural in...

▼

ResearcherID

This ResearcherID publication wizard is temporarily unavailable while ResearcherID is moving to Publons. Follow the link above to join ...

▼

Scopus - Elsevier

Import your identifier, profile and publications. The wizard helps you find the correct Scopus profile and to confirm your publications. Y...

▼



Welcome to the new Web of Science ResearcherID

ResearcherID hesabınız varsa, Login to Reseaercherid on Publons butonuna tıklayarak giriş yapabilirsiniz.

I have a ResearcherID account

LOGIN TO RESEARCHERID ON PUBLONS

Log in with your usual details to see your ResearcherID profile on Publons.

ResearcherID hesabınız yoksa, Join Publons Now butonuna tıklayarak kayıt işlemi gerçekleştirebilirsiniz.

I want to register

JOIN PUBLONS NOW

Publons is the new environment where you can benefit from the improved Web of Science ResearcherID, add your publications, track your citations, and manage your Web of Science record.

Learn more:
[ResearcherID-Publons FAQs](#)

For researchers

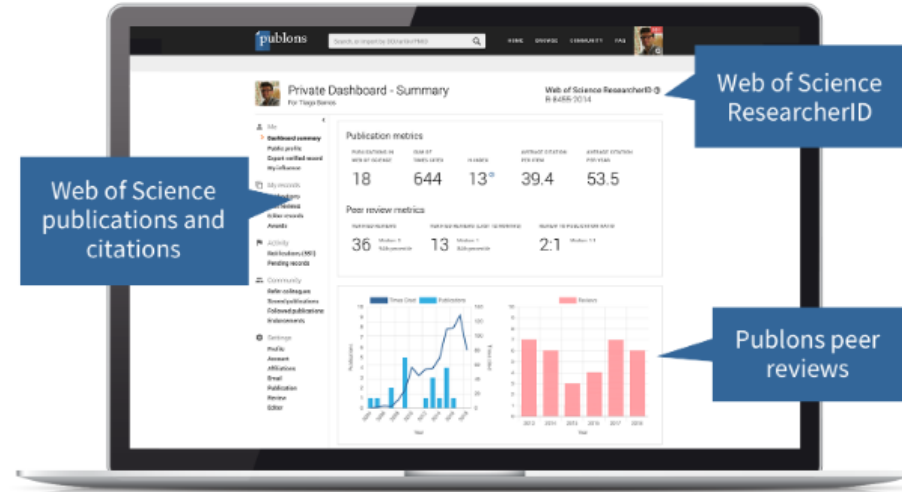
For institutions

Web of Science ResearcherID is now on Publons.

Publons is the new environment where you can benefit from the improved Web of Science ResearcherID, add your publications, track your citations, and manage your Web of Science record.

Log in with your usual details to see your ResearcherID profile on Publons.

If you have any questions, please see the [ResearcherID-Publons FAQs](#) or contact researcherid@publons.com.



- Me
- > Dashboard summary
 - Public profile
 - Export verified record

- My records
 - Publications
 - Peer reviews
 - Editor records

- Activity
 - Notifications
 - Pending records

- Community
 - Refer colleagues
 - Scored publications
 - Followed publications
 - Endorsements

- Settings
 - Account
 - Profile
 - Affiliations
 - Email
 - Permissions



Tip: Show more of your research impact

Add your publications with any of our import tools and we'll source the *Web of Science* citation counts so you can demonstrate your publication impact alongside your peer review expertise.

[IMPORT YOUR PUBLICATIONS](#)

Track my citations

Get the *Web of Science Core Collection* citation counts for your publications.



Manage my reviews

Add new or past peer reviews to show your expertise.



See my profile

See what your profile looks like to other people on Publons.



Learn to peer review

Take our online course in peer-review and put yourself in front of editors using Publons.

Publication metrics

These metrics are calculated from the publications you have imported. It may take up to an hour after importing publications for these metrics to be updated.

PUBLICATIONS IN WEB OF SCIENCE	SUM OF TIMES CITED	H-INDEX	AVERAGE CITATIONS PER ITEM	AVERAGE CITATIONS PER YEAR
-	-	-	-	-

Peer review metrics

VERIFIED REVIEWS VERIFIED REVIEWS (LAST 12 MONTHS) REVIEW TO PUBLICATION RATIO

Permissions butonuna tıklayarak yayınlarnızı ORCID hesabı ile bağlayabilirsiniz.

Community

Refer colleagues

Scored publications

Followed publications

Endorsements

Settings

Account

Profile

Affiliations

Email

Permissions

Pre-publication review display preferences

Choose default display preferences for pre-publication reviews you've written as well as those of publications you've authored.

We consider the preferences of the reviewer, author, journal, and publisher before displaying a pre-publication review and will never display more information than your preferences allow.

Find out more about review display preferences.

YOUR REVIEWER PREFERENCE

Privacy
Show journal/conferenceContent
Hide review content

Apply these settings to all of your existing pre-publication reviews

YOUR AUTHOR PREFERENCE

Content

Apply these settings to all of your existing publications

Grant review display preferences

Choose the display preferences of reviews you've written as part of grant review.

Content
Show review content

ORCID Settings

Link your ORCID to Publons to enable data sharing between the two platforms.

LINK YOUR ORCID

SAVE CHANGES

Publons hesabındaki yayınları ORCID ile güncellemek için tıklayınız.



Firdevs Merve Tatlı
<https://orcid.org/0000-0003-3156-0476>

(Not You) ?

Clarivate ?

has asked for the following access to your ORCID Record



Read your information with visibility set to Trusted Parties ?

This application will not be able to see your ORCID password or any other information in your ORCID record with visibility set to Only me. You can manage permission granted to this and other Trusted Organizations in your [account settings](#).

Authorize

Deny

Giriş yapmak için
tıklayınız.